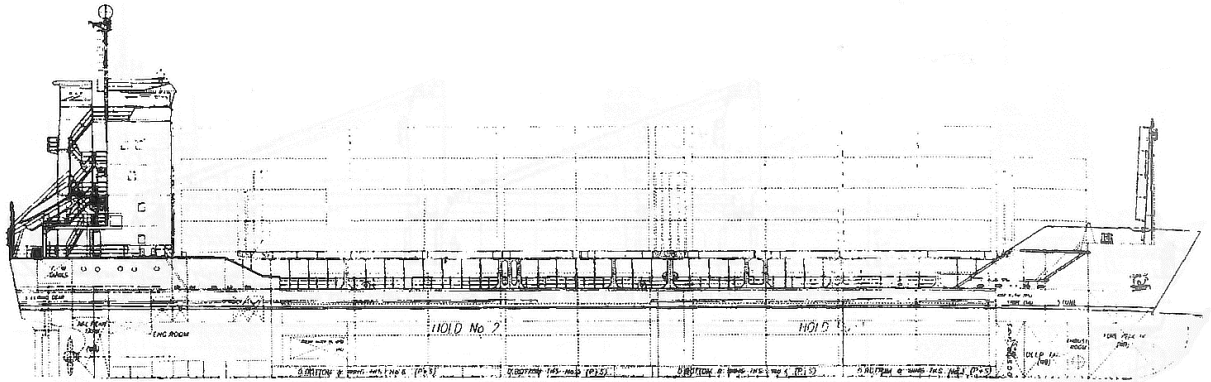


# MV "KARIN"



## **Gearless Multipurpose Container Vessel- improved type P 917 Built 12/1995 by ENVC- Portugal**

class: G.L. + 100 A5 E 'equipped for carriage of containers' + MC AUT

### **Main Dimensions**

length over all	99.98 m length
between perp.	93.37 m
Beam	16.50 m
draught	5.90 m summer
deadweight	4,696 tdw
GT/NT	3810/ 1980
IMO Nr.	9125657
Flag	Antigua Barbuda

### **Main Engine**

MAK 8M 32 – 3,520 kW (4,787 hp)

### **Auxiliaries**

- 3 diesel generators of 247 kW each
- 1 shaft generator of 875 kVA
- 1 bow thruster of 350 kW

### **Speed and Consumption**

abt. 15 knots abt. 15.5 t/day if-180

### **Tank Capacities** (always about)

HFO	267 cbm
Gasoil	80 cbm
Ballast	1,770 cbm

### **Holds and Hatches**

- 2 holds / 2 hatches
- hydraulic folding steel hatch covers

### **Reefer Connections**

58 reefer plugs on deck 380V/50 Hz

### **Container Intake**

in holds	<b>127 TEU</b>
<u>on deck</u>	<b><u>263 TEU</u></b>
<b>Total</b>	<b>390 TEU</b>

### **Stability** (always about)

227 TEU each 14 t

### **Permissible Stack Weights**

on deck	20'/24'6" container: 40 tons/per stack
	30' container: 40 tons/per stack
	40'/45'/49' container: 60 tons/per stack
hold	20'/24'6" container: 72 tons/per stack
	30' container: 90 tons/per stack
	40'/45'/49' container: 90 tons/per stack

All details without guarantee