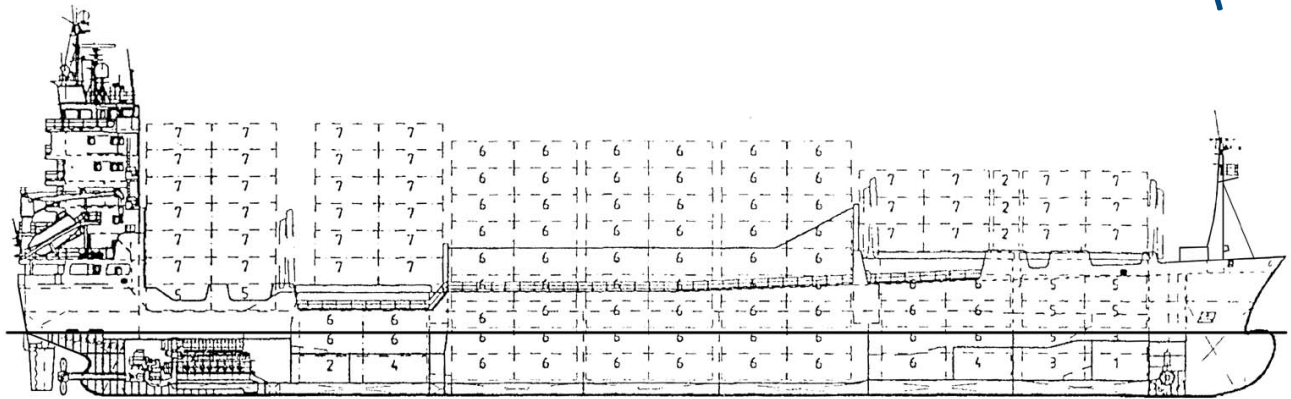


MV "CAROLINA"



Cellular Container Vessel Built 1996 by Sietas, Hamburg

class: G.L. + 100 A5 E `containership (open-top) SOLAS II-2, reg. 54', + MC E AUT

Main Dimensions

Length over all	121.35 m length
between perp.	114.90 m
breadth	18.20 m
moulded draught	6.69 m
deadweight all told	abt. 7,225 tdw sfb
GT/NT	6,362/ 3,998
IMO Nr.	9134141
Flag	Antigua Barbuda

Main Engine

MAN 8L 40/54 – 5,300 kw

Auxiliaries

2 diesel generators of 400 kw each
1 shaft generator of 850 kw

Speed and Consumption

abt. 16.5 kn/abt. 23.1 t/day if-180

Tank Capacities (always about)

IFO	580 mtons
Gasoil	130 mtons
Ballast	2,200 mtons

Holds and Hatches

4 holds / 3 hatches
hydr. operated folding steel hatch covers

Reefer Connections

100 reefer plugs on deck 380V/50 c.p.s./3 phases

Container Intake

in closed holds	108 TEU
(3 resp. 4 tiers of 9'6" each)	
in open hold	252 TEU + 36 FEU
(9 tiers of 9'6" each, 4 tiers 20', 5 tiers 40')	
on hatches resp. on deck	268 TEU
(upto 7 tiers)	
Total	628 TEU + 36 FEU

Vessel able to load 20'/40', 30', 45'-containers with overbreadth upto 2,595 mm in holds and on deck.

Stability (always about)

380 TEU each 14 t

Permissible Stack Weights

in hold 1 and 2	96 t per 20' and 30' stack 136 t per 40' stack
in hold 3	150 t per 20' and 30' stack 200 t per 40' stack
on hatches	45 t per 20' and 30' stack 65 t per 40' and 45' stack (hatch no. 4 = 80 t)
in hold 4	84 t per 20' and 30' stack 114 t per 40' stack
in front of bridge	60 t per 20' and 30' stack 80 t per 40' and 45' stack

All details without guarantee